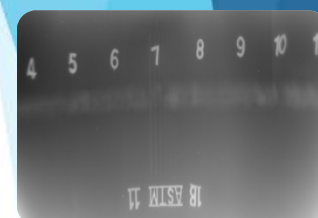
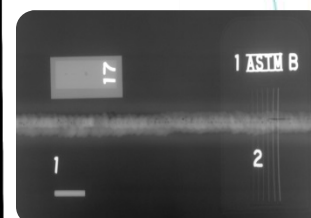
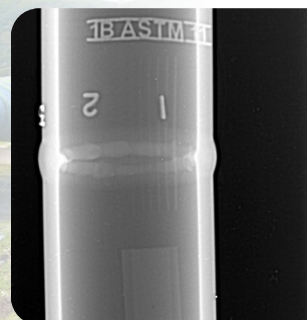




Pacific Imaging  
DIGITAL IMAGING SOLUTIONS



*Pacific Imaging's supports its portfolio of DR, CR & CT digital imaging devices using Pi NDT Software & is optimized for touch screen Windows tablets and laptops for image acquisition, analysis, and viewing.*

## PIPELINE- pacific imaging solution

SMARTER

FASTER

SAFER

We all know the Oil and Gas industry follows strict standards to maintain safety and proper functioning of equipment. What you might not know is that **Pacific Imaging** deploys cutting edge Digital Radiography Imaging solutions to analyze structure & integrity which is extremely efficient and can significantly reduce cost while producing results at tremendous speed compared to conventional film techniques. For Oil and Gas, the process of gaining acceptance for a new testing method takes time. Main challenge lies in validating the quality of the digital radiography panel. That's where **Pacific Imaging** can provide guidance based on our 25 years of experience in Imaging. Often, the new approach is qualified by three departments, including the company performing inspection, company manufacturing the tubing & company that buys the tubing. **Pictures above show images acquired using Pacific Imaging Software and Digital Detector using High Energy X-Ray.**

**Pi Software** with its "SINGLE CLICK" process makes acquiring images very easy. When you launch the software, detector and x-ray are **auto-connected**. Just press "READY" & image is acquired within a few seconds & wirelessly transferred on the tablet (or laptop) for immediate review and analysis.



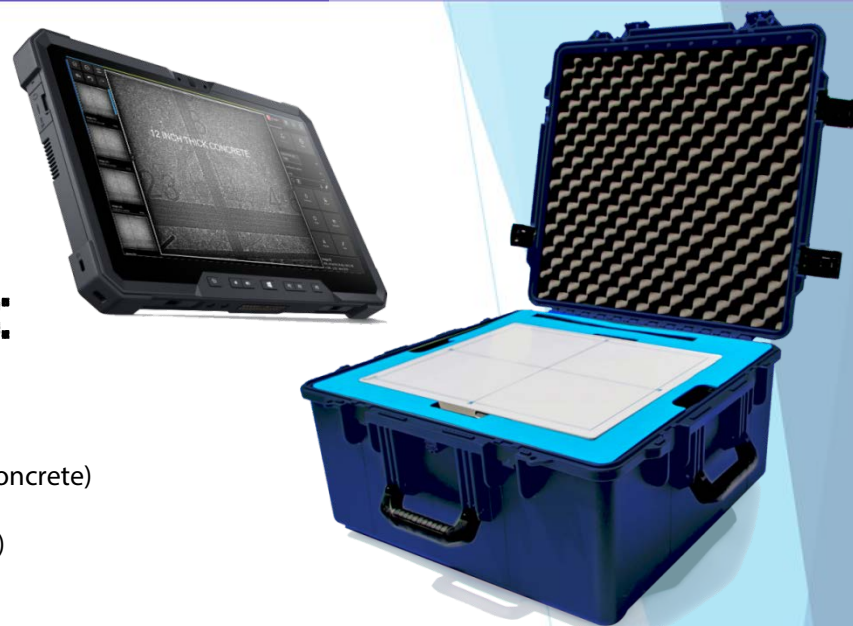
PACIFIC IMAGING, LLC. | 17595 HARVARD AVENUE, SUITE C, IRVINE, CA, U.S.A. | PACIFIC-IMAGING-LLC.COM | 657-333-5120 | SALES@PACIFIC-IMAGING-LLC.COM



## Reasons To Choose Pacific Imaging Solution

LOWER NOISE & LOWER RADIATION  
EXCELLENT CUSTOMER SUPPORT  
PLUG & PLAY SOLUTION  
25+ YEARS IN IMAGING  
16 BIT IMAGE

FULL-FIELD AED  
GLOBAL SUITABILITY  
LOW POWER CONSUMPTION  
THERMAL EFFICIENT DESIGN  
SUITE OF NDT TOOLS



## Pacific Imaging OIL & GAS PIPELINE Imaging Solution Includes:

### Pacific DR Panel

(available in 14x17, 17x17 & 10x12 inch options)

### Ruggedized Laptop and/or Tablet

### Pi Software

(for Image acquisition, storage and transfer)

### X-Ray Source

(determined depending on scope of project)

### Accessories

(include but not limited to dongle, USB wi-fi converter, Pelican case etc.)

### DR Protective Armor

### DR Mount (Heavy Duty)

### Concrete Processing Algorithms

(optimized to image 12-14" thick Concrete)

### Wi-Fi

(Air Pi Wireless Trigger for Detector)

TOTAL HARDWARE SOLUTION

TOTAL SOFTWARE SOLUTION

TOTAL SUPPORT SOLUTION

## Where to use

Newly manufactured Steel pipes  
Low Pressure Steam pipe  
Steam Coolers  
Water pipes  
Oil Pipes

## Main Benefits

Detects corrosion (Internal & External)  
Detects erosion (Internal)  
Measure pipe wall thickness  
Analyze weld quality  
Physical Damage Assessment

### PI SOFTWARE FEATURES\*

ZOOM, PAN, ROTATE, FLIP	IMAGE STORAGE, IMPORT/EXPORT, DICOM
TEXT, SHAPES, DISTANCES, AREAS	LINE PROFILE, DUPLEX WIRE
INVERT, WINDOW/LEVEL, HISTOGRAM	PIPEWALL THICKNESS MEASUREMENT
CROP, MASK, ROI, OVERLAY	ROI STATISTICS, SNR, CNR
BEST FIT, 1:1 DISPLAY, SPLIT DISPLAY	IMAGE PROCESSING, FILTERS, EMBOSING, FALSE COLORS
UNDO, REDO, RESET, PRESENTATION STATES	PIPELINES, TRIGGERS, PLUGINS
CONFIGURABLE UI, MULTI-LANGUAGE	REPORTING
INFO FOR PART AND STUDY, OVERLAY	USER LOGINS, ROLES

\*SPECIFICATIONS ARE SUBJECT TO CHANGE WITHOUT NOTICE

PACIFIC IMAGING LLC COPYRIGHT ©2018 ALL RIGHTS RESERVED BROCHURE 06202018UAE

